

SPECIFICATIONS

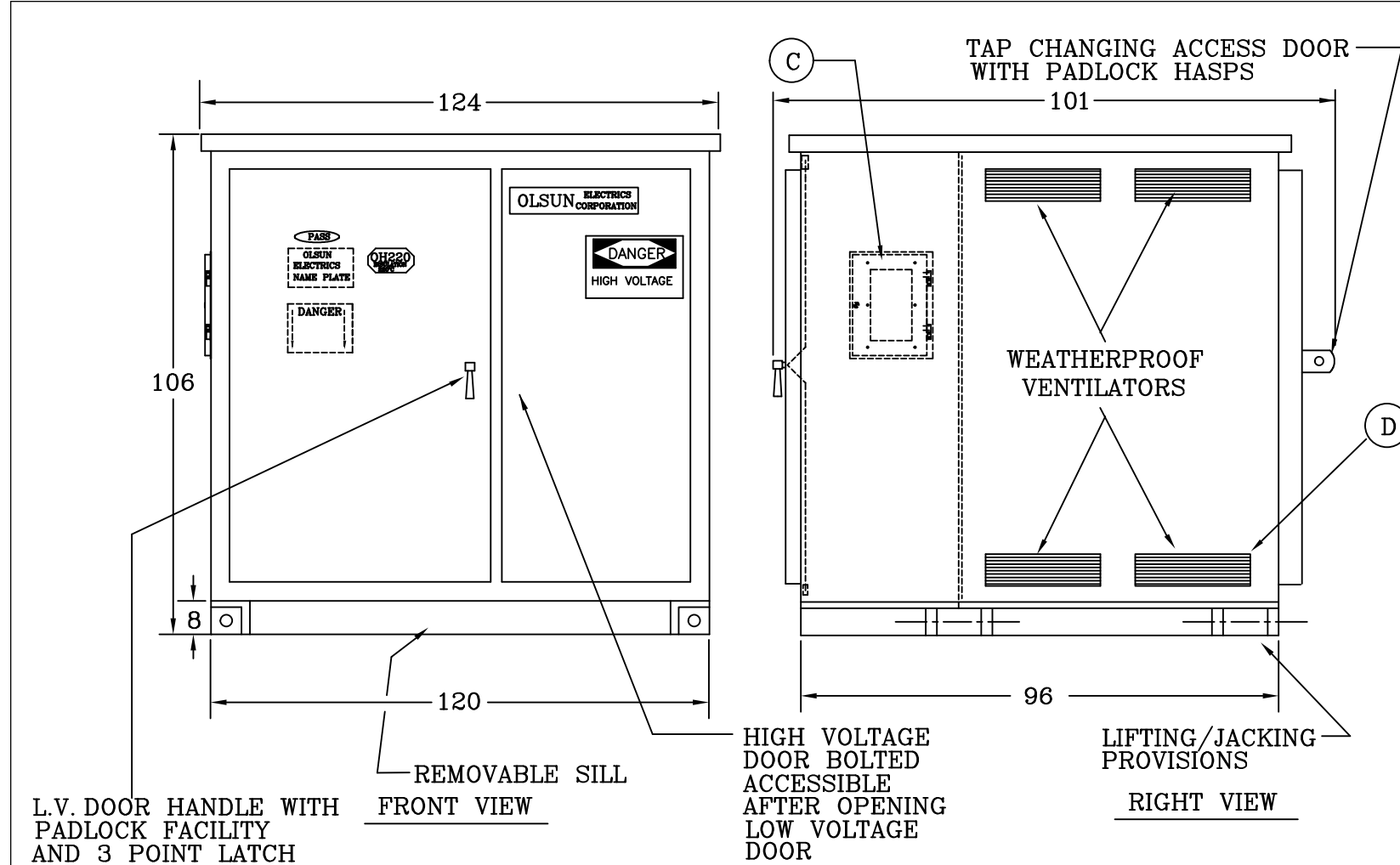
- A) LOW VOLTAGE SPADE TERMINALS
- B) HIGH VOLTAGE SPADE TERMINALS
- C) COMPLETE FAN COOLING WITH DIGITAL TEMPERATURE INDICATOR AND WITH 3 COIL SENSING (120 VOLT SUPPLY BY OTHERS)
- D) NEMA 3R PAD MOUNTED, TAMPER RESISTANT ENCLOSURE WITH MUNSELL 7GY 3.29/1.5 GREEN POWDER COAT FINISH AND DUST FILTERS
- E) COPPER WOUND
- F) 220°C INSULATION
- G) VACUUM PRESSURE IMPREGNATION
- H) DESIGNED 5db BELOW NEMA STANDARD SOUND LEVEL
- I) COMPLIANT TO REQUIREMENTS OF DOE 10 CFR PART 431
- J) UL/cUL LISTED UL FILE E143467

* - DESIGN IMPEDANCE = 5.75%

		OLSUN ELECTRICS CORPORATION		DRY TYPE TRANSFORMER CLASS AA/FA	
RICHMOND, ILLINOIS					
KVA	2500/3333	3 PHASE	HERTZ	60	%IZ *
H.V.	13800 Δ	95 KV BIL	AMPS	104.6/139.5	WGT. 21200 LBS.
L.V.	2400 Δ	60 KV BIL	AMPS	601/802	ND. A70181

H.V. TAP	VOLTS
1-2	14490
2-3	14145
1-4	13800
3-4	13455
3-6	
4-5	13110
5-6	

COMPLIANT TO DOE 10 CFR PART 431
DE-ENERGIZE TRANSFORMER BEFORE CHANGING TAPS NP-301-CT

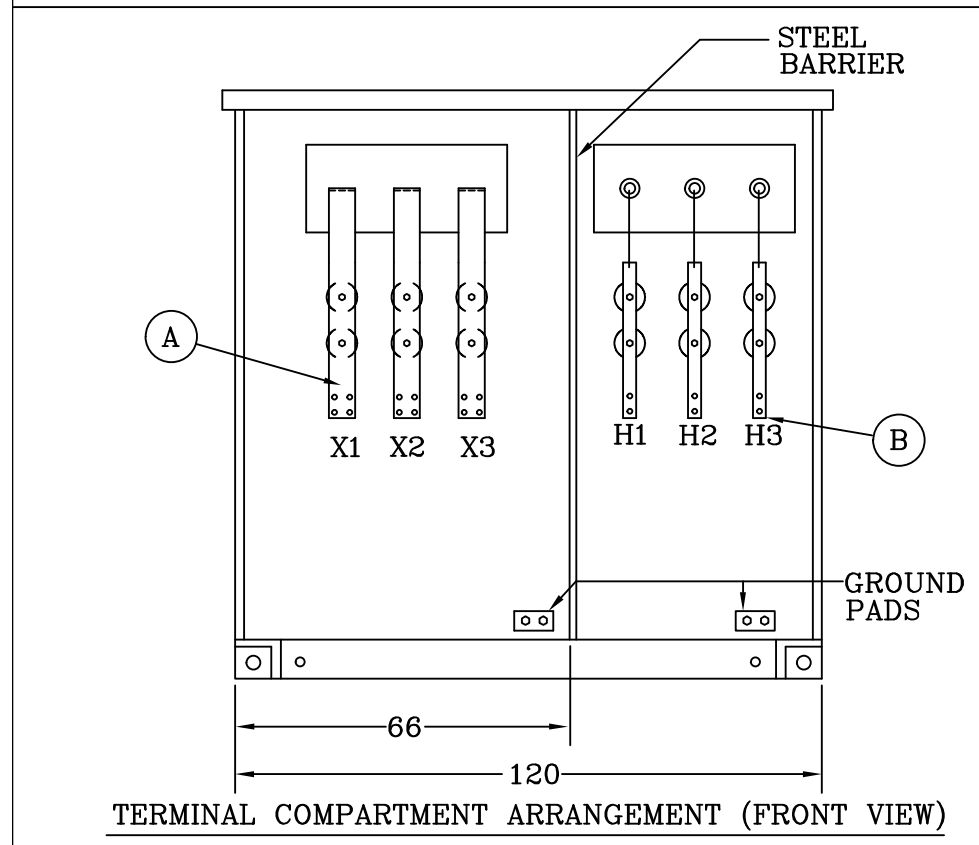


L.V. DOOR HANDLE WITH PADLOCK FACILITY AND 3 POINT LATCH

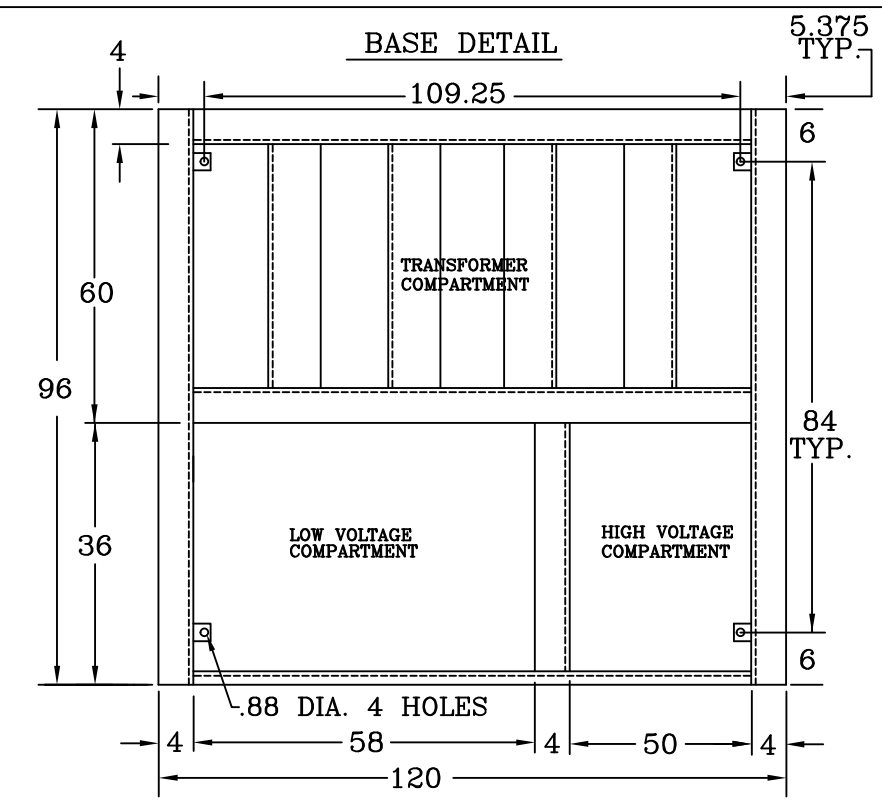
REMOVABLE SILL FRONT VIEW

HIGH VOLTAGE DOOR BOLTED ACCESSIBLE AFTER OPENING LOW VOLTAGE DOOR

LIFTING/JACKING PROVISIONS RIGHT VIEW



TERMINAL COMPARTMENT ARRANGEMENT (FRONT VIEW)

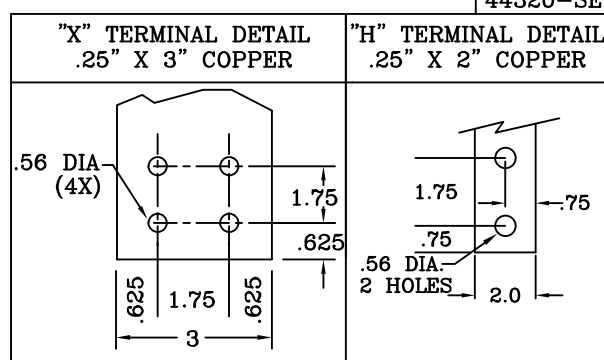


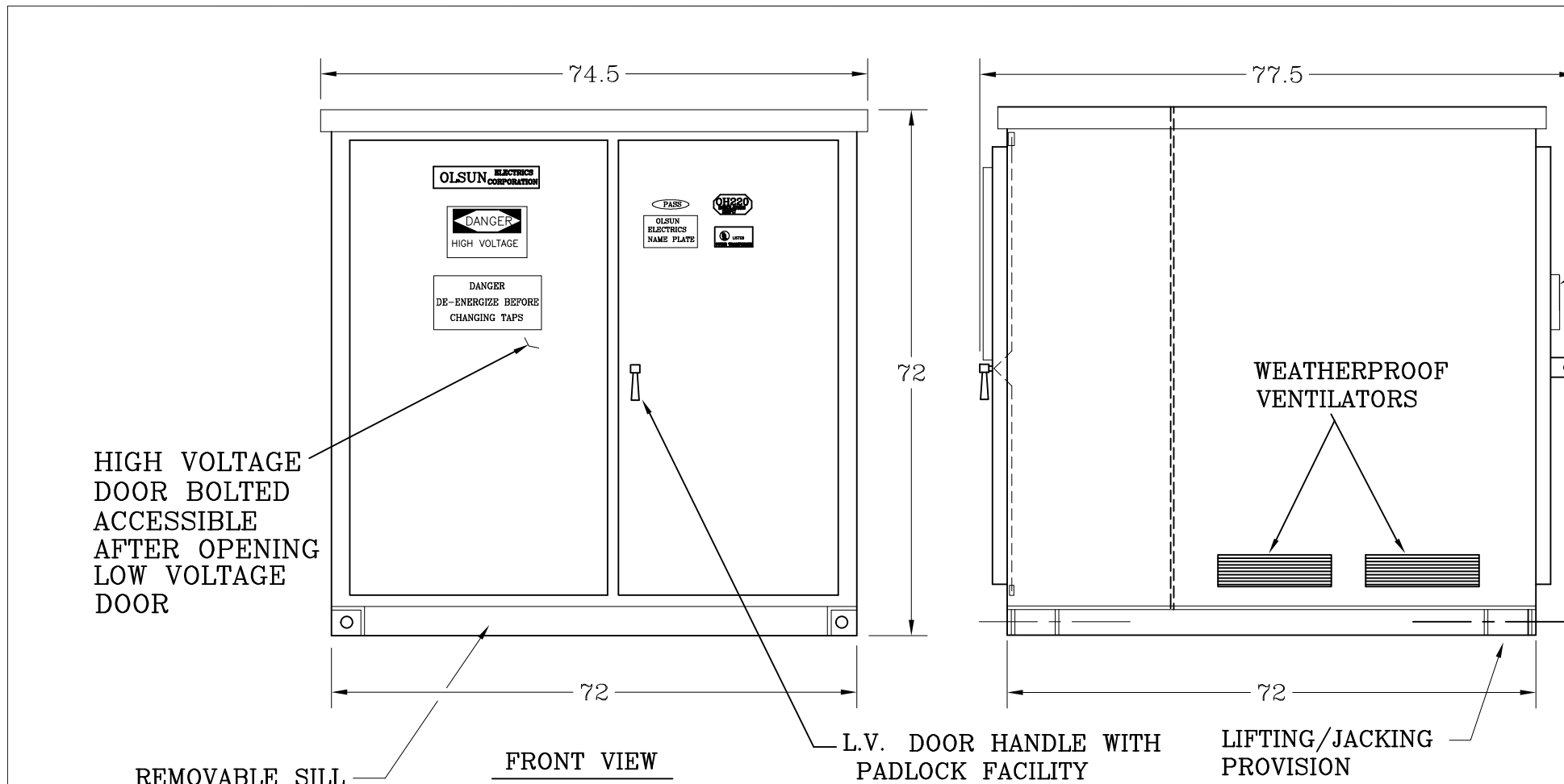
AS BUILT DRAWING

REV 01) MOVED HV TO RIGHT, LV TO LEFT, CHANGED "X" TERMINAL TO .25" X 3.0" TSH 8/8/13

REV.	01	CHECKED BY	HK	DATE	7/12/13
------	----	------------	----	------	---------

		OLSUN ELECTRICS CORPORATION		RICHMOND, ILLINOIS	
REVISIONS:	01	APPROVED BY:		DRAWN BY:	TSH
DIMENSIONS IN INCHES				DATE: 7/12/13	
DRAWING TITLE: DRY TYPE TRANSFORMER SPECIFICATIONS AND DIMENSIONAL DATA				DRAWING NUMBER: A70181	





TAP CHANGING ACCESS PANELS WITH PADLOCK HASPS

SPECIFICATIONS

- A) LOW VOLTAGE SPADE TERMINALS (4 HOLE)
 - B) HIGH VOLTAGE SPADE TERMINALS (2 HOLE)
 - C) PAD MOUNTED TAMPER RESISTANT NEMA 3R ENCLOSURE WITH AIR FILTERS AND WITH MUNSELL GREEN POWDER COAT FINISH
 - D) ALUMINUM WOUND
 - E) 220°C INSULATION
 - F) K-FACTOR 4
 - G) 200% NEUTRAL
 - H) DOUBLE VACUUM PRESSURE IMPREGNATED
 - I) STAINLESS STEEL HINGES AND HARDWARE
 - J) ELECTROSTATIC SHIELD
 - K) COMPLIANT TO 10 CFR PART 431 OF DOE EFFICIENCY STANDARD
 - L) SOUND LEVEL 5 dB BELOW NEMA STANDARD
 - M) (3) 15KV DISTRIBUTION CLASS LIGHTNING ARRESTERS
 - N) UL/cUL LISTED, UL FILE E143467
- * DESIGN IMPEDANCE= 5.0 %

	OLSON ELECTRICS CORPORATION							DRY TYPE TRANSFORMER CLASS AA	
	RICHMOND, ILLINOIS								
KVA	150	3 PHASE	HERTZ	60	%IZ	*	°C RISE	80	
H.V.	13800 Δ	95 KV BIL	AMPS	6.3	WGT.	4000	LBS.		
L.V.	208Y/120	10 KV BIL	AMPS	416.4	NO.	A71233			

H.V. TAP	VOLTS
1-2	14490
2-3	14145
1-4	13800
3-4	13455
3-6	13110
4-5	12765
5-6	12420

POLARITY: H2, H1, H3

HIGH VOLTAGE: H1, H2, H3

LOW VOLTAGE: X0, X1, X2, X3

COMPLIANT TO DOE 10 CFR PART 431 K FACTOR 4

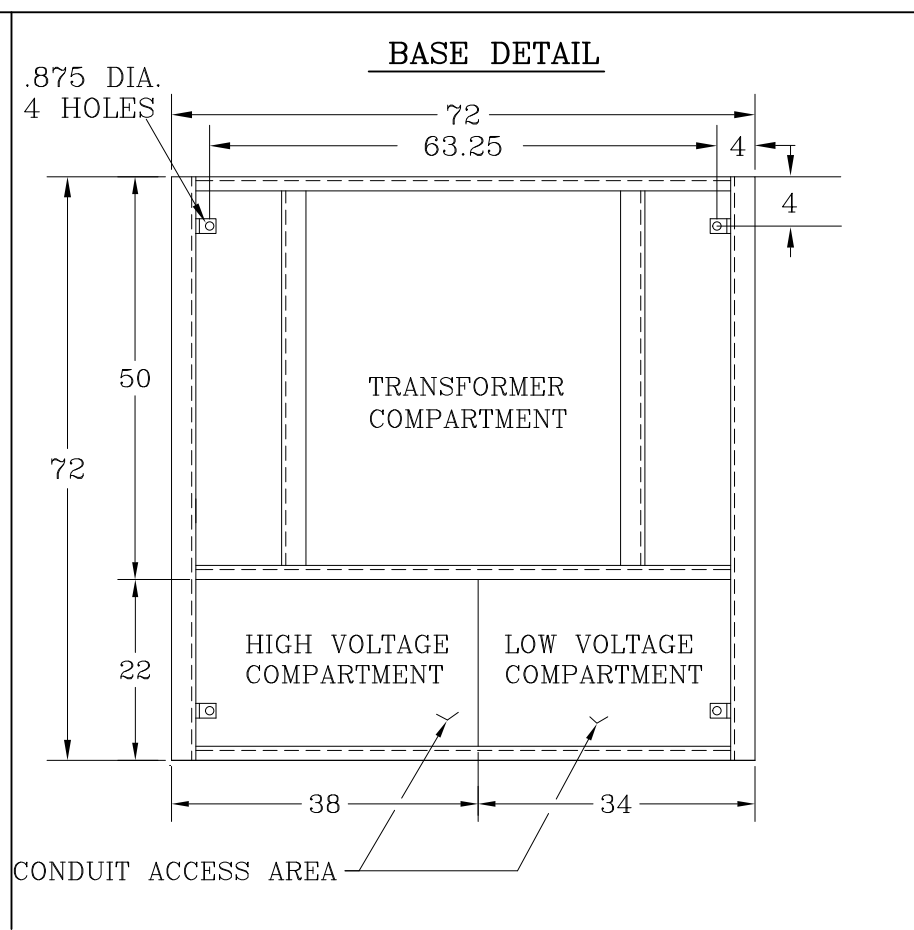
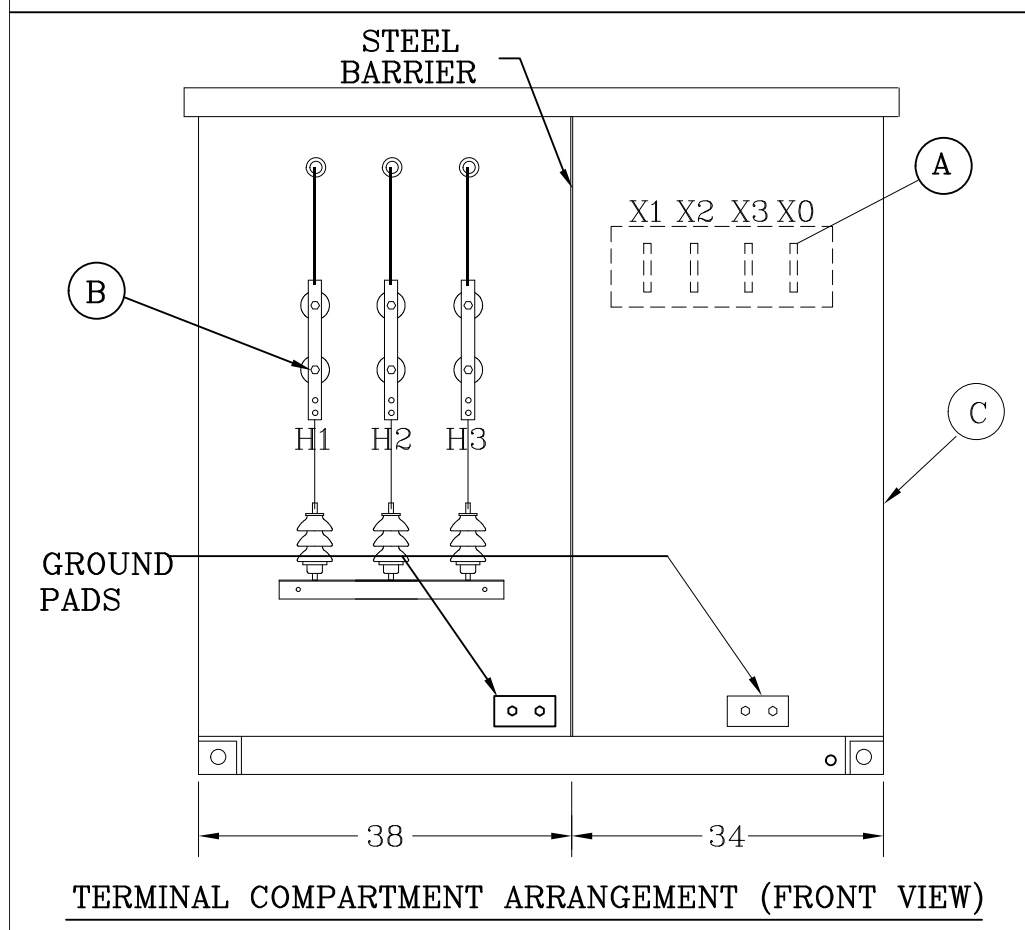
DE-ENERGIZE TRANSFORMER BEFORE CHANGING TAPS

APPROVAL BLOCK

THIS DRAWING IS APPROVED AS IS.

THIS DRAWING IS APPROVED AS MODIFIED. (PLEASE MAKE MODIFICATIONS IN RED)

SIGNATURE _____ DATE: _____



REV.	00	CHECKED BY	TV	DATE	4/10/15
------	----	------------	----	------	---------

OLSON ELECTRICS CORPORATION
RICHMOND, ILLINOIS

REVISIONS:	00	APPROVED BY:	DRAWN BY: TV
DIMENSIONS IN INCHES		DATE: 4/10/15	
DRAWING TITLE: DRY TYPE TRANSFORMER SPECIFICATIONS AND DIMENSIONAL DATA			DRAWING NUMBER: A71233