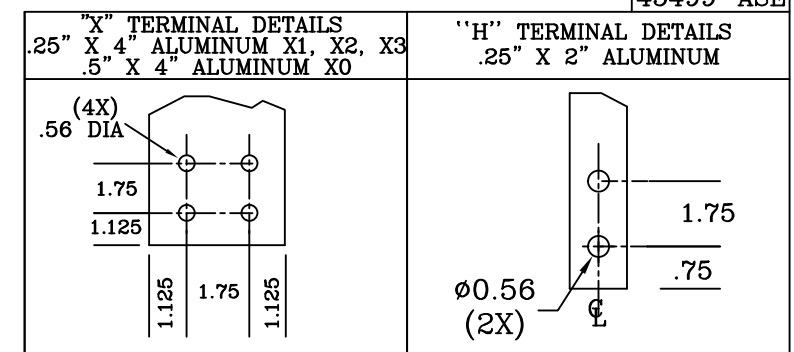


.625 DIA, MOUNTING (4X)

HV AND LV THROATS LOCATED TOWARDS FRONT OF UNIT

* DESIGN IMPEDANCE = 5.2%

45499-ASE



		OLSUN ELECTRICS CORPORATION		DRY TYPE TRANSFORMER CLASS AA	
RICHMOND, ILLINOIS					
KVA	300/390	3 PHASE	HERTZ	60	%IZ *
H.V.	480 Δ	10 KV BIL	AMPS	361/469	WGT. 2800 LBS.
L.V.	208Y/120	10 KV BIL	AMPS	833/1083	ND. A71706

H.V. TAP	VOLTS
1	504
2	495
3	480
4	465
5	457

POLARITY: H1, H2, H3

HIGH VOLTAGE: H1, H2, H3

LOW VOLTAGE: X0, X1, X2, X3

K-FACTOR 4 COMPLIANT TO DOE 16 CFR PART 431

DE-ENERGIZE TRANSFORMER BEFORE CHANGING TAPS

SPECIFICATIONS

- 1) ALUMINUM WOUND
- 2) 220°C INSULATION
- 3) NEMA 1 INDOOR ENCLOSURE WITH ANSI 61 POWDER COAT FINISH
- 4) K-FACTOR 4
- 5) 200% NEUTRAL
- 6) UL/cUL LISTED, UL FILE E78350
- 7) DUAL ELECTROSTATIC SHIELD
- 8) COMPLIANT TO EFFICIENCY REQUIREMENTS OF DOE 16 CFR PART 431

REV2) INCREASED THROAT SIZE PER SCN 17590 AND CHANGED MOUNTING LOCATION PER SCN 17592. DS 11/16/15
 REV1) CHANGED KVA TO 300/390 AND °C RISE TO 80/150. INCREASED HV BUS TO ACCOMODATE MORE CURRENT. PER SCN 17550. DS 11/3/15

REV.	02	CHECKED BY	TV	DATE	10/27/15
		OLSUN ELECTRICS CORPORATION		RICHMOND, ILLINOIS	
REVISIONS: 02		APPROVED BY:		DRAWN BY: DS	
DIMENSIONS IN INCHES				DATE: 10/27/15	
DRAWING TITLE: DRY TYPE TRANSFORMER SPECIFICATIONS AND DIMENSIONAL DATA				DRAWING NUMBER: A71706	