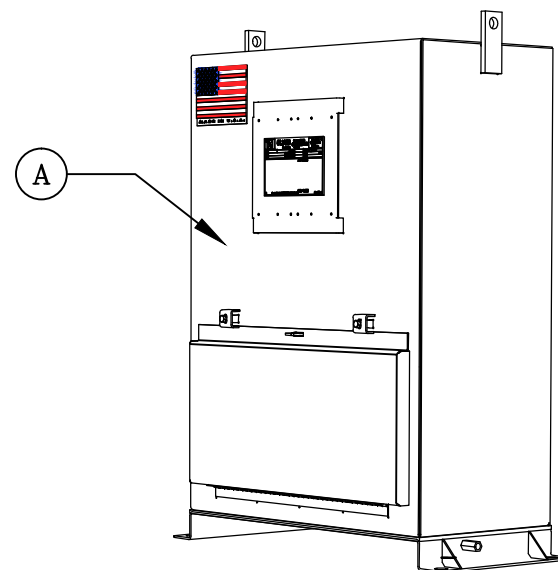
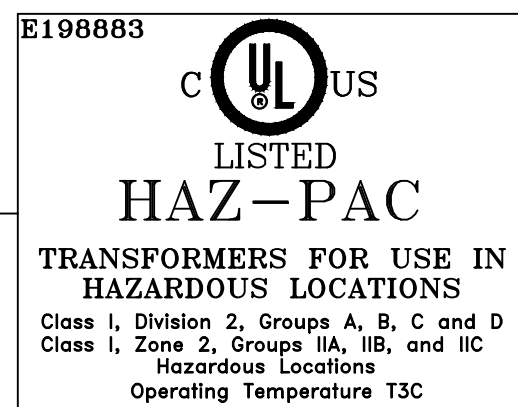



RIGHT SIDE VIEW

BACK VIEW



ITEM	DESCRIPTION
1	COPPER WOUND EPOXY RESIN ENCAPSULATED TRANSFORMER (HAZ-PAC)
2	180°C INSULATION CLASS
3	316 STAINLESS STEEL NAMEPLATE - 6.125 [156] X 3.875 [98]
4	316 STAINLESS STEEL TAG NAMEPLATE (REFER TO TAG DRAWING AS REQUESTED)
5	HV TERMINAL (SEE DETAIL)
6	LV TERMINAL (SEE DETAIL)
7	MADE IN U.S.A.
8	HAZ-PAC LABEL (SEE DETAIL)
9	8 [203] X 20 [508] CUTOUT ACCESS BEHIND HINGED DOOR COVER WITH NEOPRENE GASKET AND PADLOCK PROVISION
10	INTERNAL GROUND STUD (.38-16 SS [m10]) WITH REMOVABLE X0 LEAD
11	HV TAP LEADS
12	LIFTING LUGS
13	CONDUIT ACCESS (BOTH SIDES AND/OR THROUGH BOTTOM)
14	EXTERNAL .50 - 13 GROUND PROVISIONS (2).
	SPECIFICATIONS
A	NEMA 4X 316 SS ENCLOSURE WITH ANSI 61 POWDER COAT FINISH. ENCLOSURE THICKNESS TO BE 12 GAUGE WITH 10 GAUGE BOTTOM.
B	MANUFACTURED IN ACCORDANCE WITH APPLICABLE NEMA ST-20 AND APPLICABLE ANSI/IEEE C57.12.01 STANDARDS
C	Dyn1 VECTOR GROUP
D	UL/CUL LISTED - UL FILE E198883. CL. 1, DIV. 2 GAS GROUPS A, B, C & D, TEMPERATURE CLASS T3C (NEC 500) CL. 1, ZONE II GAS GROUPS IIA, IIB, IIC, TEMPERATURE CLASS T3C (NEC 505)
E	ESTIMATED DESIGN IMPEDANCE: 1.8%
F	SOUND LEVEL: 45dB MAX PER NEMA ST-20
G	SUITABLE FOR 50°C MAX AMBIENT TEMPERATURE APPLICATION
H	ESTIMATED NO LOAD LOSSES: 197W ESTIMATED TOTAL LOSSES: 734W
I	ESTIMATED EFFICIENCY @ 35% LOAD: 97.68% @ 50% LOAD: 98.00% @ 75% LOAD: 98.00% @ 100% LOAD: 97.71%
J	SUITABLE FOR FLOOR/RACK INSTALLATION



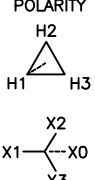
**OLSUN** *Electrics*  
**Engineered Transformer Solutions**  
[www.olsun.com](http://www.olsun.com)    tel. 800.336.5786

DRY TYPE  
 TRANSFORMER  
 CLASS GA

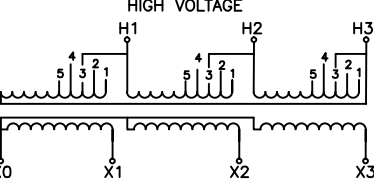
KVA	30	3	PHASE	HERTZ	60	%IZ		°C RISE	115
H.V.	480 Δ	10	KV BIL	AMPS	36	WGT.	760	[345KG]	LBS.
L.V.	400Y/231	10	KV BIL	AMPS	43.3	NO.	A69906		

H.V. TAP	VOLTS
1	504
2	490
3	480
4	466
5	456

**POLARITY**



**HIGH VOLTAGE**




**LOW VOLTAGE**

**50°C AMBIENT**

DE-ENERGIZE TRANSFORMER BEFORE CHANGING TAPS

NAMEPLATE DRAWING

 <b>OLSUN</b> <i>Electrics</i> Engineered Transformer Solutions	RICHMOND, ILLINOIS TEL. 800.336.5786 WWW.olsun.com	
	REVISIONS: 11	THIS DOCUMENT IS THE PROPERTY OF OLSUN ELECTRICS COMPANY AND MUST NOT BE COPIED, REPRODUCED OR DISCLOSED TO OTHERS WITHOUT THE EXPRESS WRITTEN CONSENT OF OLSUN ELECTRICS COMPANY.
APPROVED BY: ANK	DRAWN BY: JPA	DATE: 10/25/17
DIMENSIONS IN INCHES (MM) TOLERANCES: ONE DECIMAL: +/- .5" TWO DECIMAL: +/- .025" THREE DECIMAL: +/- .0125"	DRAWING TITLE: HAZ PAC ENCAPSULATED TRANSFORMER	DRAWING NUMBER: A69906-44074

REV11: REV TAP #4 ON N/P FROM 467 PER SALES 12/4/18 TF  
REV10: UPDATED PER CRS-10002, JPA 8-31-18  
REV09: UPDATED FULL LOAD EFFICIENCY, ANK 1/16/18  
REV08: REVISED TO NEW LAYOUT, JPA 10/25/17