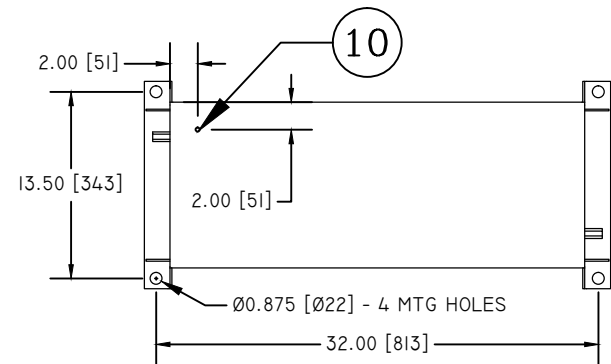
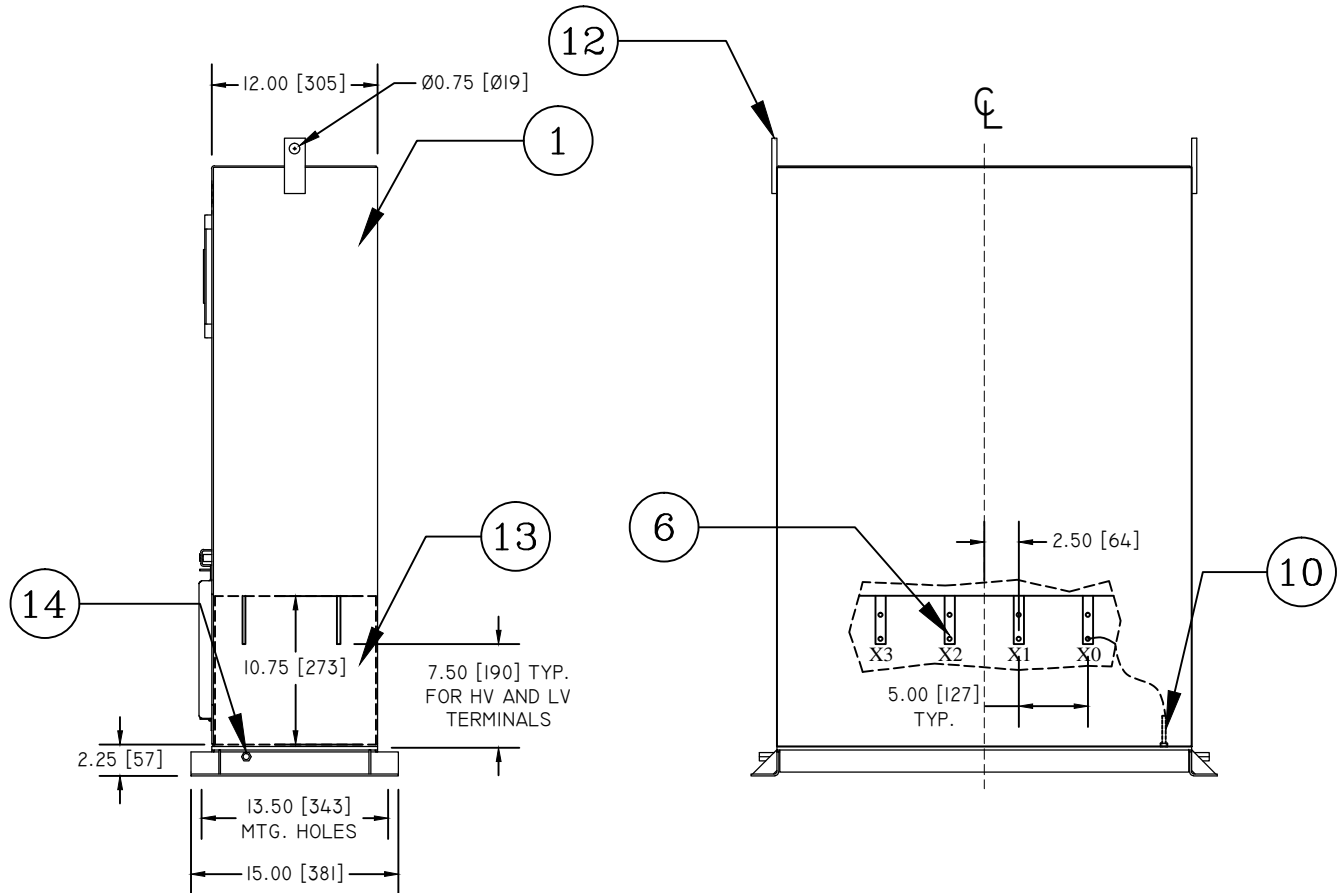


FRONT VIEW

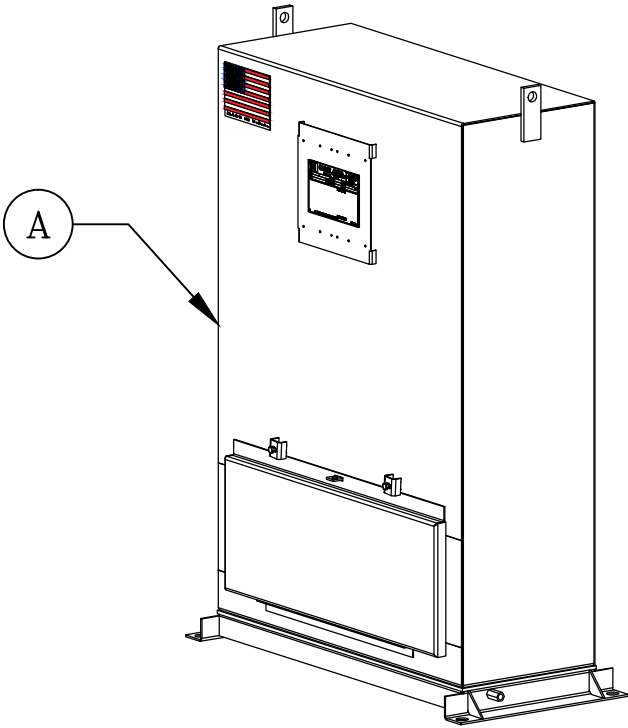
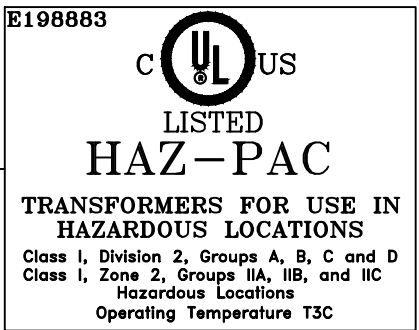


"A-A" VIEW

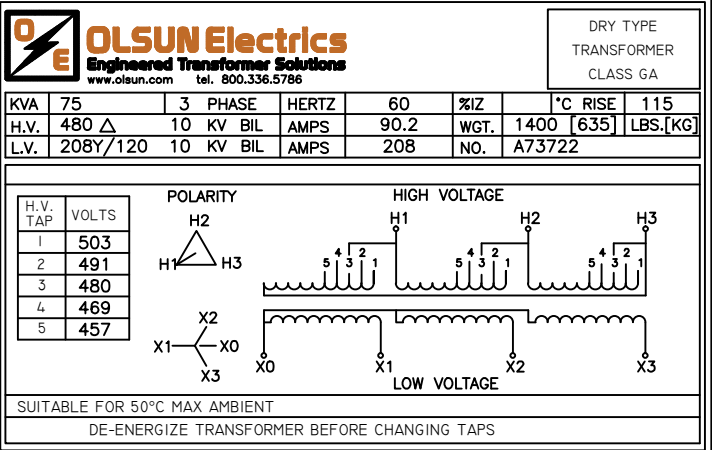


RIGHT SIDE VIEW

BACK VIEW



ITEM	DESCRIPTION
1	COPPER WOUND EPOXY RESIN ENCAPSULATED TRANSFORMER (HAZ-PAC)
2	180°C INSULATION CLASS
3	316 STAINLESS STEEL NAMEPLATE - 6.125 [156] X 3.875 [98]
4	316 STAINLESS STEEL TAG NAMEPLATE (REFER TO TAG DRAWING as REQUESTED)
5	HV TERMINAL (SEE DETAIL)
6	LV TERMINAL (SEE DETAIL)
7	MADE IN U.S.A.
8	HAZ-PAC LABEL (SEE DETAIL)
9	8 [203] X 32 [813] CUTOUT ACCESS BEHIND HINGED DOOR COVER WITH NEOPRENE GASKET AND PADLOCK PROVISION
10	INTERNAL GROUND STUD (.38-16 SS [m10]) WITH REMOVABLE X0 LEAD
11	HV TAP LEADS
12	LIFTING LUGS
13	CONDUIT ACCESS (BOTH SIDES AND/OR THROUGH BOTTOM)
14	EXTERNAL .50 - 13 GROUND PROVISIONS (2).
SPECIFICATIONS	
A	NEMA 4X 316 SS ENCLOSURE WITH ANSI 61 POWDER COAT FINISH. ENCLOSURE THICKNESS TO BE 12 GAUGE WITH 10 GAUGE BOTTOM.
B	MANUFACTURED IN ACCORDANCE WITH APPLICABLE NEMA ST-20 AND APPLICABLE ANSI/IEEE C57.12.01 STANDARDS
C	Dyn1 VECTOR GROUP
D	UL/cUL LISTED - UL FILE E198883. CL. 1, DIV. 2 GAS GROUPS A, B, C & D. TEMPERATURE CLASS T3C (NEC 500) CL. 1, ZONE II GAS GROUPS IIA, IIB, IIC, TEMPERATURE CLASS T3C (NEC 505)
E	ESTIMATED DESIGN IMPEDANCE: 1.3.%
F	SOUND LEVEL: 50dB MAX PER NEMA ST-20
G	SUITABLE FOR 50°C MAX AMBIENT TEMPERATURE APPLICATION
H	ESTIMATED NO LOAD LOSSES: 450W ESTIMATED TOTAL LOSSES: 1390W
I	ESTIMATED EFFICIENCY @ 35% LOAD :97.69% @ 50% LOAD: 97.92% @ 75% LOAD: 97.86% @ 100% LOAD: 97.61%
J	SUITABLE FOR FLOOR/RACK INSTALLATION



NAMEPLATE DRAWING

OLSUN Electrics Engineered Transformer Solutions www.olsun.com tel. 800.336.5786		RICHMOND, ILLINOIS TEL. 800.336.5786 www.olsun.com	
REVISIONS: 00	THIS DOCUMENT IS THE PROPERTY OF OLSUN ELECTRICS CORPORATION AND MUST NOT BE COPIED, REPRODUCED OR DISCLOSED TO OTHERS WITHOUT THE EXPRESS WRITTEN CONSENT OF OLSUN ELECTRICS CORPORATION.	DRAWN BY: BJP	
APPROVED BY: TF		DATE: 09/20/2018	
DIMENSIONS IN INCHES (MM) TOLERANCES: ONE DECIMAL: +/- .5" TWO DECIMAL: +/- .025" THREE DECIMAL: +/- .0125"	DRAWING TITLE: HAZ PAC ENCAPSULATED TRANSFORMER	DRAWING NUMBER:	A73722-51311